

Quick Start Guide

Mobile Hotspots KT- M2C

Copyrights © 2023 Kingtop Corp. All rights reserved. The information contained in this document is subject to change without notice and should not be construed as a commitment by Kingtop Corp.

Patents and Licenses

For a complete list of all Kingtop Corp. patents, visit <https://www.kingtoptec.com>

Software License

Proprietary Rights Provisions:

The software drivers provided with this product are copyrighted by Kingtop Corp. and/or Kingtop Corp.' suppliers. Although copyrighted, the software drivers are unpublished and embody valuable trade secrets proprietary to Kingtop Corp. and/or Kingtop Corp. suppliers. The disassembly, decompilation, and/or Reverse Engineering of the software drivers for any purpose is strictly prohibited by international law. The copying of the software drivers, except for a reasonable number of back-up copies is strictly prohibited by international law. It is forbidden by international law to provide access to the software drivers to any person for any purpose other than processing the internal data for the intended use of the software drivers.

Trademarks and Service Marks

Kingtop Corp. is a trademark of Kingtop Corp., and the other trademarks, logos, and service marks (collectively the "Trademarks") used in this user manual are the property of Kingtop Corp. or their respective owners. Nothing contained in this user manual should be construed as granting by implication, estoppel, or otherwise, a license or right of use of Kingtop Corp. or any other Trademark displayed in this user manual without the written permission of Kingtop Corp. or its respective owners.

- Kingtop Corp., and the Kingtop Corp. logo are all trademarks of Kingtop Corp.

The names of actual companies and products mentioned in this user manual may be the trademarks of their respective owners.

Contents

1. Get to know your 5G MiFi KT-M2C	- 1 -
Menu button	- 1 -
Power button	- 1 -
USB Type-C Port	- 1 -
2. Prepare your 5G MiFi KT-M2C	- 1 -
Install the SIM Card	- 1 -
Remove the SIM Card	- 2 -
Charge the Battery	- 2 -
3. Access the Internet	- 3 -
Summary Diagram	- 3 -
4. Information of LCD	- 4 -
5. Manage your 5G MiFi KT-M2C	- 5 -
Logging into the Device Management website	- 5 -
Setting up Wi-Fi connection	- 5 -
How to change the Wi-Fi Name & Password	- 5 -
Power Off	- 5 -
Restore Factory Settings	- 5 -
6. Troubleshooting your 5G MiFi KT-M2C	- 6 -

1. Get to know your 5G MiFi KT-M2C



Menu Button

There are four functionalities supported by the menu button as following.

- 1.1 Log in to the Setting Web page.
- 1.2 Scan the QR code to connect to WiFi.
- 1.3 Display SSID and Key
- 1.4 Display Calendar

To switch the functional menu by pressing the button.

Power Button

To turn on/off the device by pressing the power button.

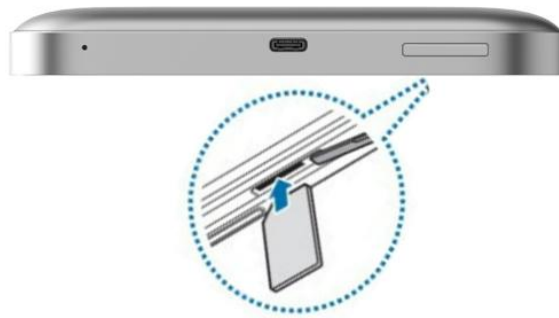
USB Type-C Port

Using Type-C port for battery charging, data tethering and device management.

2. Prepare your 5G MiFi KT-M2C

Install the SIM Card

- Step1. Power off the 5G Mobile hotspots, unplug the battery.
- Step2. Insert the SIM card into card slot in the correct position.
- Step3. Plug in the battery.



Insert the SIM card into the slot.

Note:

1. Do not remove SIM card when the device is powered on since this may damage the card and the device.
2. Do not bend or scratch your SIM card. Avoid exposing your SIM card to static electricity, water or dirt.

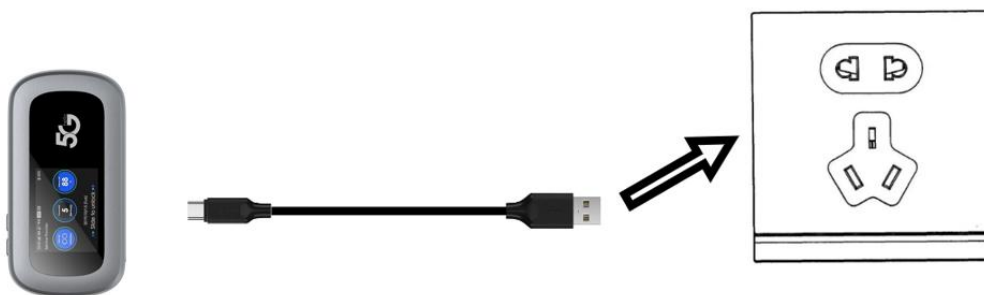
Remove the SIM Card

1. Turn the power off and Unplug the battery, then Open the SIM Card cover.
2. Gently remove the SIM card from the SIM card slot and close the SIM Card cover.

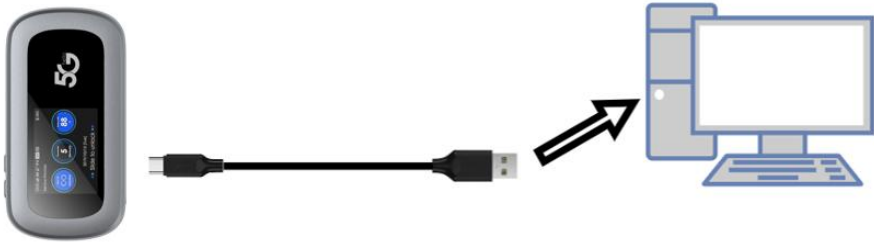
Charge the Battery

There are TWO ways to charge the battery of 5G Mobile hotspots:

1. Charging battery by using the power socket.



2. Charging the battery by using the USB-A of computer or laptop.

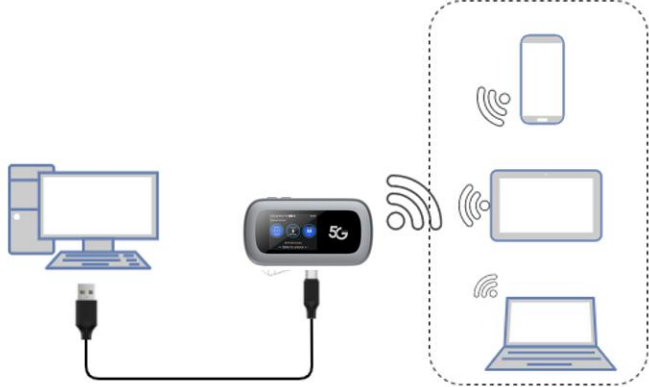


3. Access the Internet

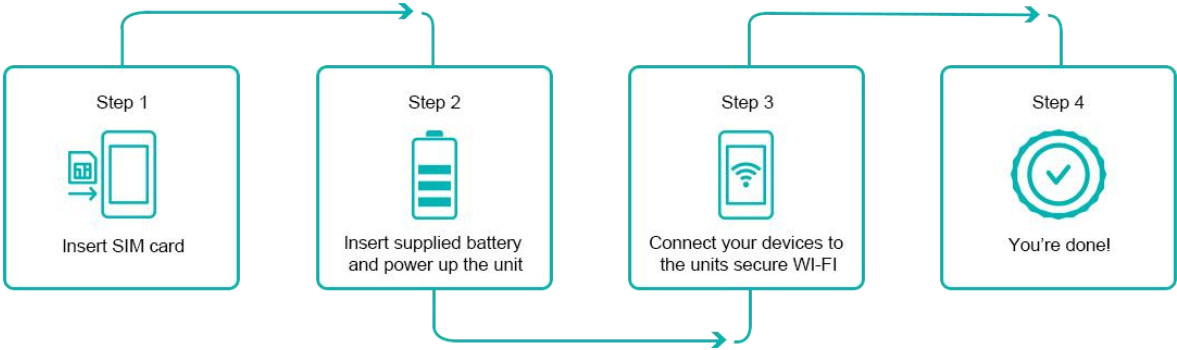
After preparation of insert the SIM card, charging the battery, then your Wi-Fi devices and the computer can access the Internet through 5G Mobile hotspots KT-M2C, enjoy high-speed network services.

Smart phones, tablet computers, game consoles and other Wi-Fi devices can be connected with the 5G Mobile hotspots Wi-Fi connection for Internet access.

Computers & laptops may be connected to the 5G Mobile hotspots KT-M2C via Type-C cable for Internet Access.






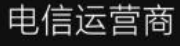
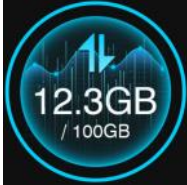
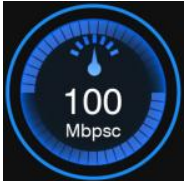


Summary Diagram



4. Information of LCD



Icon	Description
	Signal status icon
	Network mode icon
	Battery capacity icon, if battery capacity is lower than 20%, this icon is red
	Number of clients with Wi-Fi connection
	Message notification
	Display the date and time, and press the MENU key to switch the display of WiFi name and password.
	Carrier operator
	Used flow display
	Rate display

5. Manage your 5G MiFi KT-M2C

Logging into the Device Management Website

1. Make sure your device is connected to the 5G Mobile hotspots via Wi-Fi or USB Type-C cable.
2. Open the browser, and enter <http://192.168.43.1> in the address bar.
3. Enter password and click “Login”.

Note: To access the web management page for the first time, you need to reset your password.

Setting up Wi-Fi Connection

1. Press and hold the “power” button for 3 seconds until the welcome logo is displayed on the LCD, and Wi-Fi is on.
2. Use your terminal to search the wireless network connection with the Wi-Fi’s Name of “5G-MIFI-2.4G-xxxx” or “5G-MIFI-5G-xxxx” and click “Connect”. If the security mechanism is applied, you need to enter the correct PASSWORD.

The default password is 12345678.

Note: XXXX is the last 6 digits of device MAC

You can also find the default SSID and Password by the Wi-Fi Info menu on the device screen.

How to change the Wi-Fi Name & Password

Through web UI:

1. Log in to <http://192.168.43.1> and enter the management page.
2. Select WLAN> WiFi Basic Settings, then you will see “Wi-Fi Name ” and “WiFi Password”, Make sure you delete the old name and password and enter the new name and password as you require.
3. Select “Save” button, wait for the screen to display prompting “Success”, and then log out.
4. Wait for the computer or laptop screen to display the Wi-Fi icon. This means the wireless network connection has been successful.

Power Off

Press the Power button and hold for 9 seconds, it will display shutting downing.

Restore Factory Settings

Press the Power button and hold for 15 seconds, it will display Restore Factory

Note:

Factory Reset will delete all the device’s user-defined Wi-Fi settings and restore Admin setting and Wi-Fi Setting to factory default.

6. Troubleshooting your 5G MiFi KT-M2C

Q1: If you are having problem to use 5G Mobile hotspots,

A1: please try the operations as following.

1. If the 5G MIFI is not responsive, reboot it by press the “Power” button for about 5 seconds to show the Reboot selection, and then reboot it.
2. Restore factory settings.

Q2: If the connection between your 5G Mobile hotspots KT-M2C and a PC/Laptop through a USB cable cannot be established automatically,

A2: please try to uninstall the driver software and reinstall it.

Q3: If the connection between your 5G Mobile hotspots and a client device through Wi-Fi cannot be established,

A3: please try the operations as following.

1. Ensure that the Wi-Fi function is enabled.
2. Refresh the network list and select the correct SSID.
3. Check the IP address, and ensure that your client can automatically obtain an IP address.
4. Enter the correct network key (Wi-Fi password) when you connect the client device to your 5G Mobile hotspots .

Q4: If the client device connected to your 5G Mobile hotspots cannot access the Internet,

A4: please try the operations as following.

1. Ensure that your nano-SIM card is available.
2. Change the location and find a place with good signal.
3. Check the settings of the WAN connection mode.
4. Contact your service provider and confirm your APN settings.

Q5: If 5G Mobile hotspots configuration page cannot be visited,

A5: please try the operations as following.

1. Enter the correct address. Please view the label on your device to get the default Device Manager Website IP address.
2. Use only one network adapter in your PC.
3. Do not use any proxy server.

Note:

There are security risks associated with operating system upgrades and updates. Users are only supported to use official channels for operating system upgrades and updates. If users upgrade using unofficial operating system update packages, the resulting security risks and losses are the responsibility of the user.